



*A Classic*  
PARTY RENTAL

**Classic** is *always* in style.



A Classic Party Rental opened its doors in 1989 with the philosophy to provide Indianapolis and surrounding communities with a one stop shop for party and special occasion goods. The founders of A Classic believed people wanted to use the best silver, china and linens for their once-in-a-lifetime events but didn't want to purchase these items. Thus, A Classic was born.



Today, in our 30,000 square foot retail building, A Classic has everything imaginable for truly memorable weddings, reunions, banquets, meetings, bar mitzvahs, or any other type of gathering that necessitates first class equipment and first-rate service.

A Classic has gathered the finest team of professionals to make your occasion special. From the event design team that assists you with party planning ideas and suggestions, to the crews that cheerfully and conscientiously deliver and assemble your equipment, A Classic is the best in the business and ready to serve your every need.



(317) 251-7368

*A Classic*  
PARTY RENTAL

FAX (317) 253-0586

# Directions to A Classic Party Rental

## **From the South:**

Take I-465 North to the Keystone Avenue exit. Turn left off of exit onto Keystone Avenue. Proceed to the 86th Street on-ramp. Turn right on-to 86th Street. Go to the fifth stop light or Evergreen Avenue. Turn left. Proceed two blocks south on Evergreen. A Classic is located on the left hand side of the road. Behind Kroger.

## **From the North:**

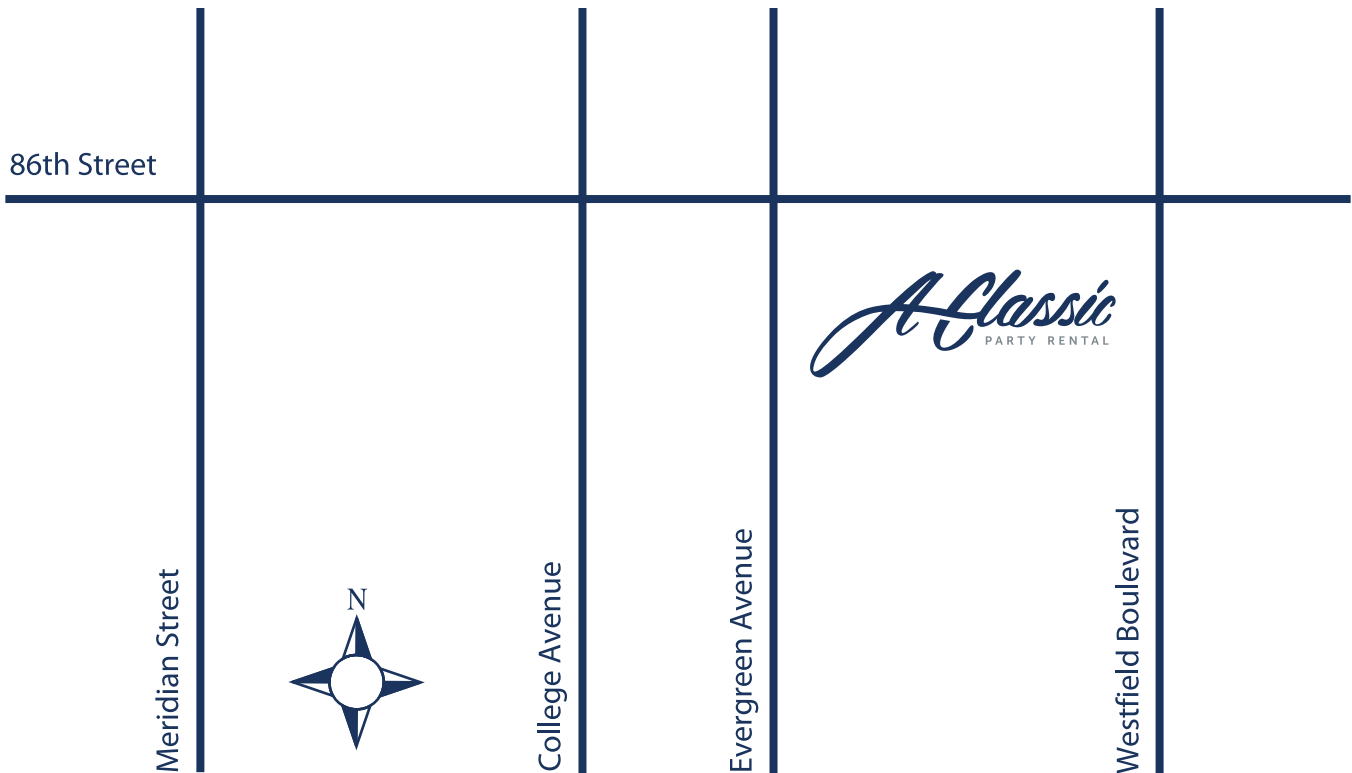
Take Meridian Street south to 86th Street. Turn left onto 86th Street. Go to the third stop light or Evergreen Avenue. Turn right. Proceed two blocks south on Evergreen. A Classic is located on the left hand side of the road. Behind Kroger.

## **From Downtown:**

Take Meridian Street north to 86th Street. Turn right. Go to the third stop light or Evergreen Avenue. Turn right. Proceed two blocks south on Evergreen. A Classic is located on the left hand side of the road. Behind Kroger.

## **General Directions:**

Located one mile east of Meridian Street at 86th Street and Evergreen. A Classic sits back one block south of the Nora Target shopping center (between College Avenue and Westfield Boulevard). Behind Kroger.



(317) 251-7368



FAX (317) 253-0586

# All About Renting

## HOURS

Licensors's showroom is open Monday-Friday 9:00 a.m. - 5:00 p.m. and Saturday 8:00 a.m. - 12:00 Noon. Licensors's showroom is closed on Sundays and Holidays. Days and hours of operation are subject to change at licensors's discretion.

## RATES

All rates are quoted based upon the number of **days Customer's event is scheduled**. Weekends are typically considered a **one day rental**. Events lasting longer than one day are subject to higher rental rates. Please call Licensors for long term rates. All rental charges are measured from the time the Equipment is out of Licensors's possession, not time used. Rates and charges are subject to change without notice.

## PAYMENT

Except for tent rentals, a reservation fee equal to 25% of the total rental charge is required to confirm rental reservations. The reservation fee for tent rentals is 100% of the total rental charge for the tent upon confirmation and no refund of the reservation fee for a tent will be made upon cancellation. The amount of any and all reservation fees will be applied toward Customer's rental obligations. Payment is to be in the form of Visa, Mastercard or American Express or, at the discretion of Licensors, by check or cash. As a condition of accepting cash, a security deposit to cover the potential cost of loss of Licensors's equipment must be made in addition to the payment of the reservation fee. The reservation fee is Customer's assurance that the items requested will be available on the day Customer requests.

Final Payment is due in full on all orders at least two (2) days prior to delivery if by cash or credit card and one (1) week prior to delivery if by check. Licensors reserves the right not to deliver equipment on accounts not paid in full or delinquent. Return check fee-Fifty Dollars (\$50.00)

## CANCELLATIONS

No reservation fee will be refunded for the cancellation of a tent order. The reservation fee and order cancellation fee for the other Equipment is as follows.

**For cancellations prior to (30) days from the scheduled date-no cancellation fee and full refund of reservation fee to Customer.**

**For cancellations thirty (30) days or less from the scheduled date up to the second (2nd) day prior to the scheduled date-no cancellation fee, but the reservation fee will be retained by the Licensors.**

**For cancellations one (1) day prior or later to the scheduled date- a cancellation fee of 50% of the total charges for the order will be due from Customer and the reservation fee will be retained by Licensors.**

## WEAR AND TEAR FEE

Customer shall pay a non-refundable fee equal to 10% of the rental fee. This cost covers wear and tear on the Equipment and is not insurance. This fee relieves the Customer of the cost of minor damages and repairs to the Equipment. This fee does not cover material damage, theft, loss, vandalism, misuse, abuse or missing Equipment and Customer shall be separately liable for such events. **All broken items and pieces relating to the Equipment must be returned to Licensors.**

## DELIVERY & PICK UP

Delivery and pick-up services are available for all orders. The delivery and pick-up charge is based upon the zip code of the delivery address. This charge includes pick-up and delivery during normal showroom hours. Licensors delivers before and after regular showroom hours for an additional fee quoted upon request, which will include overtime for employees. Standard delivery and pick-up does not include set-up, and/or tear-down. If a Customer requires delivery to be made to a specific floor or area beyond the tailgate of the delivery vehicle, additional charges will apply.

Note: Licensors will not set up equipment in a private residence if Licensors is required to go up and down stairs. Licensors will not move or remove any items not owned by Licensors. Customer's authorized representative must be present at both delivery and pick-up to sign and verify the counts and condition of the Equipment. If no one is present, Customer agrees to abide by Licensors's delivery and pick-up counts and inspections. For sanitary reasons, Licensors reserves the right to count large orders of unwashed glassware, china, linen and flatware at Licensors's, facilities.

## TENTING

Licensors reserves the right to deliver tenting prior to the event date or pick-up after the event date based upon weather conditions.

## SET-UP & TEAR DOWN

Set-up and tear down services for Equipment are available at an additional charge. These arrangements are to be made in advance of delivery and pick-up. Customer must be present for set up and tear down unless otherwise prearranged. If a Customer is not available for set-up or tear down when Licensors arrives, Licensors will set up or remove equipment in such a manner as Licensors determines is appropriate.

## RENTAL EQUIPMENT USE

Customer is responsible for all Equipment from time of receipt to time of return. Table and chairs must be folded, stacked, bagged and ready for pick-up. Customer must rinse and repack in the containers supplied all china, silverware, glassware, etc. Customer is responsible to make linens dry and refuse free to prevent mildew and staining. Customer must return hangers and skirting clips. Items missing or not meeting these conditions are subject to additional fees, which are available upon request.

**Note: It is the Customer's responsibility to check that the Equipment is received and returned as provided in this contract. Customer must notify Licensors immediately if the rental items are not correct or acceptable. The after- hours and/or emergency number is noted on the front of this rental contract.**

## DISCOUNT OFFERS

A Classic Party Rental will match any reasonable local competitors offer. Just bring in the written quote in person and book your event that day with a deposit. Please present to us prior to ordering . Customers may use only one coupon per order, per visit, per event.

*PRICES SUBJECT TO CHANGE.*

(317) 251-7368



FAX (317) 253-0586

# Tables



6' or 8' BANQUET



2' or 3' COCKTAIL  
(STAND-UP & SIT-DOWN AVAIL.)



3', 4', 5', or 6' ROUND

6' banquet.....	6.50
8' banquet.....	7.00
24" (2') round pedestal (stand up) cocktails.....	7.25
36" (3') round (stand up) cocktails.....	8.25
30" round (folding).....	5.75
36" (3') round (folding).....	6.25
48" (4') round (folding).....	6.50
60" (5') round (folding).....	7.00
60" x 60" (5' x 5') square (folding).....	10.25
72" (6') round (folding).....	9.75



CLASSROOM TABLE  
18 INCH X 6' OR 18 INCH X 8'



5' SQUARE TABLE



SQUARE TABLE - 30" X 30"

30 x 30 square folding.....	5.75
Classroom table 18" x 6'.....	6.50
Classroom table 18" x 8'.....	7.00
Table leg extenders.....	.50 each



HALF ROUND



3' & 5' SERPENTINE

3' Serpentine.....	12.75
5' Serpentine.....	13.00
6' Bar top (includes 1- 6' table, 1 bar skirt & 1 cloth).....	36.00
5' - 1/2 Round.....	8.00
8' Juvenile.....	8.00
Table-umbrella table only.....	12.00
Table w/umbrella.....	26.00
White Umbrella.....	21.00
*Table set-up charge.....	1.25
*Table tear-down charge.....	1.25



8' JUVENILE TABLE AND CHAIRS

# Chairs



BLACK SAMSONITE



BONE SAMSONITE



WHITE SAMSONITE



WHITE RESIN



WOOD CHAIR

Samsonite bone with bone metal leg.....	1.00
Wooden Natural Stain.....	2.50
Samsonite black with chrome leg.....	1.60
Samsonite white with chrome leg.....	1.60
White resin with pad.....	3.00
Black resin with pad.....	3.00
Ballroom stack chair.....	3.50
Gold Chiavari (includes cushion).....	8.50
Silver Chiavari (includes cushion).....	8.50
Mahogany Chiavari (includes cushion).....	8.50
Black Chiavari (includes cushion).....	8.50
Clear Chiavari (includes cushion).....	8.50
White Chiavari (includes cushion).....	8.50
Chiavari bar stool (includes cushion).....	20.00
Bar stool.....	5.00
Booster seat.....	3.00
High chair.....	10.00
Juvenile chair.....	.85
*Set-up per chair.....	.60
*Tear-down per chair.....	.60
Chair Cushions.....	3.00

## CHAIR COVERS

Poly stretch chair cover (includes sash of various fabrics).....	3.25
Chair sashes (extra sashes starting at).....	1.00
Satin self tie chair bags.....	4.00
*Chair covers installed.....	2.00
*Chair covers removed.....	1.00



IVORY CHAIR BAG



IVORY STRETCH  
CHAIR COVER



MAHOGANY  
CHIAVARI



SILVER  
CHIAVARI



CHIAVARI BAR  
STOOL BLACK

# Services

Chairs are delivered stacked or bagged. They are ready for pick-up the same way. Set-up and tear down of chairs is available at an additional charge and must be arranged for in advance. Service includes unbagging, unstacking or unfolding chairs and placing them around tables and the reverse at pick-up. Table set-up and tear down is also available. Additional charges apply going beyond the first floor.

Set-up per table.....	1.25
Tear-down per table.....	1.25
Set-up per chair.....	.60
Tear-down per chair.....	.60
Chair covers installed.....	2.00
Chair covers removed.....	1.00

(317) 251-7368

*A Classic*  
PARTY RENTAL

FAX (317) 253-0586

www.aclassicpartyrental.com

# Linens

## POLYESTER

90" Round	6.25
96" Round	6.75
108" Round	8.75
120" Round	12.25
132" Round	14.25
Banquet	6.00
90 x 132 (Skirt-less cloth for 6' banquet table)	15.25
90 x 156 (Skirt-less cloth for 8' banquet table)	20.25
54" Square	4.25
64" Square	4.75
72" Square	5.25
84" Square	6.00
90" Square	6.25
Napkins (rented in lots of ten)	0.50 each
8' Skirt	8.25
13' Skirt	13.25
21' Skirt	21.25
Skirting Clips	0.15

## IMPERIAL AND MOIRE

90" Round	8.25
96" Round	9.75
108" Round	12.75
120" Round	14.75
132" Round	18.25
Banquet	7.25
90 x 132 (Skirt-less cloth for 6' banquet table)	20.25
90 x 156 (Skirt-less cloth for 8' banquet table)	30.25
54" Square	5.25
64" Square	6.25
72" Square	6.25
84" Square	8.25
90" Square	9.25
Napkins (rented in lots of ten)	0.60 each
21' Skirt	31.75
Skirting Clips	0.15 each

## SOMERSET

90" Round	9.25
96" Round	10.75
108" Round	13.75
120" Round	15.75
132" Round	22.25
Banquet	9.25
90 x 132 (Skirt-less cloth for 6' banquet table)	25.25
90 x 156 (Skirt-less cloth for 8' banquet table)	30.25
54" Square	6.50
64" Square	7.50
72" Square	7.75
84" Square	8.75
90" Square	9.25
Napkins (rented in lots of ten)	0.75 each

## SATIN AND BENGALINE

96" Round	15.25
108" Round	17.25
126" Round	20.25
132" Round	25.25
90 x 132 (Skirt-less cloth for 6' banquet table)	20.25
90 x 156 (Skirt-less cloth for 8' banquet table)	25.25
Napkins (rented in lots of ten)	1.00 each

## PINTUCK

96" Round	15.25
108" Round	17.25
120" Round	20.25
132" Round	25.25
90 x 132 (Skirt-less cloth for 6' banquet table)	25.25
90 x 156 (Skirt-less cloth for 8' banquet table)	30.25
Napkins (rented in lots of ten)	1.50 each

## IRIDESCENT CRUSH

72" Square	10.25
90" Round	15.25
96" Round	15.25
108" Round	17.25
120" Round	20.25
132" Round	25.25
90 x 132 (Skirt-less cloth for 6' banquet table)	25.25
90 x 156 (Skirt-less cloth for 8' banquet table)	30.25
Napkins (rented in lots of ten)	1.25 each

## TAFFETA

120" Round	30.25
90 x 156 (Skirt-less cloth for 8' banquet table)	30.25

## LAME

90" Round	13.25
96" Round	14.25
120" Round	26.25
54" Square	7.25
64" Square	15.25
72" Square	14.25
84" Square	15.25
90" Square	14.25
Napkins (rented in lots of ten)	1.50 each

## TISSUE LAME

90" Round	12.25
96" Round	12.75
108" Round	14.75
120" Round	22.25
132" Round	24.25
Banquet	15.25
90 x 156 (Skirt-less cloth for 8' banquet table)	30.25
54" Square	6.75
64" Square	12.25
72" Square	12.25
84" Square	13.25
90" Square	14.25

## POLY PRINTS

90" Round	14.25
96" Round	15.75
108" Round	18.75
120" Round	23.75
132" Round	28.25
Banquet	13.75
54" Square	6.50
64" Square	7.25
72" Square	8.25
84" Square	9.50
90" Square	13.25
Napkins (rented in lots of ten)	0.60 each

## ORGANZA

72" Square	15.25
84" Square	15.25
120" Round	15.25

## ETERNITY

54" Square	6.50
84" Square	15.25

# Serving Utensils



STERLING SILVER UTENSILS



STAINLESS CAKE KNIFE AND CAKE & PIE SERVERS



STAINLESS LADLES AND ICE SCOOP



STAINLESS CARVING KNIFE & FORK AND KNIFE SHARPENER



STAINLESS SERVING SPOONS



STAINLESS TONGS - ASSORTED

Carving fork.....	2.00
Carving knife .....	3.00
Spatula.....	2.00
Lobster Cracker.....	2.00
Ice scoop.....	2.00
Tongs (all sizes).....	2.00
Ice Tongs.....	2.00
Ladle (all sizes).....	2.00
Cake server.....	2.00
Pie server.....	2.00
Serving Spoon (slotted and solid).....	2.00



ABBAY



CROYDON



CHATEAU



PRIM

# Flatware

NOTE: All flatware is rented in lots of ten

## Chateau - STAINLESS ORNATE

Dinner fork.....	0.35
Salad fork.....	0.35
Cocktail fork.....	0.35
Dinner knife.....	0.35
Butter knife.....	0.35
Soup spoon.....	0.35
Teaspoon.....	0.35
Ice Tea spoon.....	0.35



## Croydon - SILVER PLATED

Dinner fork.....	0.45
Salad fork.....	0.45
Cocktail fork.....	0.45
Dinner knife.....	0.45
Butter knife.....	0.45
Soup spoon.....	0.45
Teaspoon.....	0.45
Ice Tea spoon.....	0.45



## Prim - SILVER PLATED

Dinner fork.....	0.45
Salad fork.....	0.45
Cocktail fork.....	0.45
Dinner knife.....	0.45
Butter knife.....	0.45
Soup spoon.....	0.45
Teaspoon.....	0.45

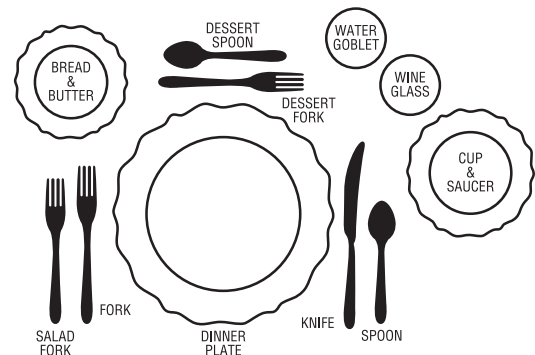


## Abbey - GOLD PLATED

Dinner fork.....	0.45
Salad fork.....	0.45
Dinner knife.....	0.45
Butter knife.....	0.45
Teaspoon.....	0.45



This illustration will serve as a Check List when you order flatware.



You'll need a serving fork and/or spoon for each serving dish, bowl or tray.



# China

Note: All china is rented in lots of ten



SILVER BAND



GOLD BAND



SYRACUSE



CASTLE WHITE

## Castle White - White Coupe Shape

6" plate .....	.40 each
8" plate .....	.40 each
9" plate .....	.40 each
10" plate .....	.40 each
Soup cup .....	.40 each
Soup bowl .....	.40 each
Fruit bowl .....	.40 each
Coffee cup .....	.40 each
Coffee saucer .....	.40 each
Plate lid cover .....	1.00 each



## Gold Band - Ivory with Gold Rim

6" plate .....	.45 each
7" plate .....	.45 each
10" plate .....	.45 each
Soup cup .....	.45 each
Soup bowl .....	.45 each
Fruit bowl .....	.45 each
Coffee cup .....	.45 each
Coffee saucer .....	.45 each
Plate lid cover .....	1.00 each



## Syracuse - Ivory Patterned

5 <sup>5</sup> / <sub>8</sub> " plate .....	.50 each
7 <sup>5</sup> / <sub>8</sub> " plate .....	.50 each
10" plate .....	.50 each
Soup bowl .....	.50 each
Coffee cup .....	.50 each
Coffee saucer .....	.50 each
Plate lid cover .....	1.00 each



## Silver Band - White with Silver Band

6 <sup>1</sup> / <sub>2</sub> " plate .....	.50 each
7 <sup>1</sup> / <sub>2</sub> " plate .....	.50 each
10 <sup>5</sup> / <sub>8</sub> " plate .....	.50 each
12" Charger Plate .....	3.00 each
Coffee cup .....	.50 each
Coffee saucer .....	.50 each
Plate lid cover .....	1.00 each



## Square - White

6" plate .....	.60 each
7" plate .....	.60 each
10" plate .....	.60 each



## Majestic Gold - White with Gold Pattern Rim

6.25" Bread & Butter plate .....	.60 each
8.25" Salad plate .....	.60 each
10.75" Dinner plate .....	.60 each
12" Charger plate .....	3.00 each
Coffee cup .....	.60 each
Coffee saucer .....	.60 each



## Misc. China

White coffee mugs .....	.40 each
Black coffee mugs .....	.40 each



## Glass Plates



GLASS CAKE PLATES



GLASS HOSTESS PLATE



SUNDAE CUP

6" plate .....	.40 each
8" plate .....	.40 each
9" plate .....	.40 each
Hostess plate & cup .....	.80 each
Glass cake stand w/cover .....	8.00 each

## Bowls

Glass bowl salsa cocktail 2 oz. ....	40 each
Glass bowl sherbert 5 oz .....	40 each
Glass bowl salad 4" .....	40 each
Bowl white 5" .....	2.00 each
Assorted print .....	\$5.00 each
12" grey square speckled bowl .....	10.00
14" beige square speckled bowl .....	10.00
14" black square speckled bowl .....	10.00

## Glassware



Excalibur Wine all purpose.....	.50 each
Excalibur Champagne .....	.50 each
Wine (6.5 oz) .....	.40 each
Wine (8.5 oz) .....	.40 each
Wine (10 oz).....	.40 each
Water (10.5 oz) .....	.40 each
Water (11.5 oz).....	.40 each
Pilsner (12 oz).....	.40 each
Bolla Grande (17.5 oz).....	.40 each
Champagne Flat (4.5 oz) .....	.40 each
Champagne Tulip (6 oz) .....	.40 each
Champagne Tulip (9 oz) .....	.40 each
Beer mug.....	.40 each
Soda glass.....	.40 each
Cordial (1.25 oz) .....	.40 each
Whiskey shot (1 oz) .....	.40 each
Whiskey sour (3.5 oz) .....	.40 each
Frosted highball .....	.40 each
Glass punch cup .....	.40 each
Small old fashioned .....	.40 each
Medium old fashioned .....	.40 each
Large old fashioned .....	.40 each
Juice glass .....	.40 each
Brandy glass (3.5 oz) .....	.40 each
Brandy glass (9 oz) .....	.40 each
Rocks glass (9 oz).....	.40 each
Irish coffee mug .....	.40 each
Highball (10 oz).....	.40 each
Martini (6 oz) .....	.40 each



WINE & WATER  
DECANTER



PILSNER &  
BEER MUG



JUICE GLASS



OLD FASHIONED GLASS



IRISH COFFEE



HIGHBALL



WATER GOBLETs

## Colored Glassware



Pink water (12 oz).....	.55 each
Pink wine (8 oz) .....	.55 each
Black stem wine (8 oz).....	.55 each
Black stem water (12 oz) .....	.55 each
Black stem champagne (6 oz).....	.55 each

## Crystal



ARCO



PRELUDIO

### Arco - Cut Crystal

Champagne flute (5 oz).....	1.00 each
Water (8.5 oz) .....	1.00 each
Wine (8 oz) .....	1.00 each
Cocktail (10 oz).....	1.00 each



### Preludio - Lead Crystal

Champagne flute .....	1.50 each
Water (12 oz) .....	1.50 each
Wine (7 oz) .....	1.50 each



## Angelique Swirl

Champagne flute .....	.50 each
Water (10.5 oz) .....	.50 each
Wine (10 oz).....	.50 each



### Beverage Guidelines:

The average drinker consumes 4 to 6 drinks in an evening.  
One quart of liquor will make 20 drinks, using a 1 1/2 oz. jigger.  
One case (12 bottles) of Champagne will serve  
60-80 people with one drink each.

## Sterling Silver

Revere bowl (6", 8", 10") .....	5.00 each
Champagne bucket w/stand .....	13.00 each
Water pitcher .....	8.00 each
Coffee pourer .....	8.00 each
Round bread basket.....	2.00 each



BREAD BASKETS



CHAMPAGNE BUCKET WITH STAND

## Serving Trays

Round stainless gallery (18"x1.5" deep).....	7.00 each
Oval stainless (13"x19") .....	5.00 each
Gold trim tray (20").....	6.00 each
Gold trim tray (25").....	7.00 each
Oblong stainless tray (14"x18") .....	5.00 each
Round stainless tray (19.5").....	6.00 each
Round tray (8") .....	6.00 each
Large shrimper .....	8.00
Hammered Oval (11"x15") .....	5.00
Hammered Rectangle (16"x11").....	6.00
Oval grey marbled (27"x9.5") .....	10.00
Rectangular ceramic white (18"x9") .....	7.00
Two tier buffet stand .....	20.00
Three tier tray.....	15.00
Four tier tray.....	20.00



STAINLESS ROUND ETCHED SERVING TRAYS



STAINLESS OVAL ETCHED SERVING TRAYS



STAINLESS SQUARE & RECTANGULAR ETCHED SERVING TRAYS



STAINLESS WITH GOLD TRIM - PUNCH BOWL & ROUND SERVING TRAYS



2 TIER BUFFET STAND - WHITE CERAMIC



3 AND 4 TIER STAINLESS BUFFET STANDS

Using a variety of shapes and sizes of trays makes a more interesting food presentation.

## Table Accessories

Gravy boats s/s.....	1.00
Salt and pepper (Cut Glass) .....	1.25
Mini salt and pepper .....	1.00
Salt and pepper (Eiffel Tower) .....	1.00
Creamer (Glass).....	1.00
Creamer (Cut Glass).....	1.00
Sugar caddy (Glass).....	1.00
Bread basket (Wicker) .....	1.00
Ashtray (Glass) .....	1.00
Table number stand w/numbers.....	1.00
Fleur de lis Gold Table Number Stands.....	2.00
Sterling Napkin Rings .....	1.00
Gold Acrylic Napkin Rings (round and square available) .....	1.00



SALT & PEPPER SHAKERS



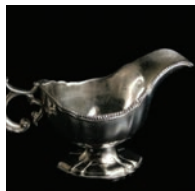
GLASS SUGAR BOWL & CREAMER



SILVER AND BRASS  
NAPKIN RINGS



WICKER BREAD BASKET



STAINLESS STEEL GRAY  
BOAT

## Punch Bowls

40 cup gold trim punch bowl .....	15.00
100 cup gold trim punch bowl .....	20.00
24 cup glass punch bowl .....	12.00

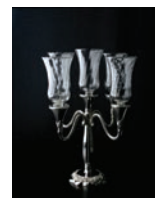


## Floral

Votive candle holder .....	.50
Roly Polly Cup.....	.50
Decorative Votive Cups .....	2.00
Round mirror (12").....	3.00
Round mirror (18").....	5.00
Fluted bowl - stem martini.....	5.00
Martini bowl .....	5.00
Eiffel Tower vase .....	7.50
Silver candelabra (26") .....	15.00
5 branch candelabra.....	25.00
Brass 29" single candelabra w/floral bowl.....	30.00
Silver candelabra (30").....	35.00

## Wedding Equipment

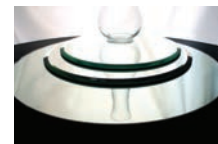
Plastic columns (white).....	15.00
Plastic urns (white).....	10.00
Wedding cake stand .....	25.00



SILVER CATHEDRAL  
WITH TALL GLOBES



30 INCH SILVER  
CANDELABRA



ROUND MIRRORS -  
10, 12, & 18 INCHES



SQUARE WHITE  
PEDESTAL

# Chafing Dishes



WIRE CHAFER



ROUND ORNATE CHAFER



OBLONG ORNATE CHAFER



BRASS ROLL TOP CHAFER

Wire chafar.....	12.00
Round ornate chafar.....	18.00
Oblong ornate chafar.....	22.00
Brass roll top chafar.....	45.00
Brass round chafar.....	35.00
7 oz. Sterno - burns for approx. 2 hours.....	1.75

# Hotel Pans

2.5" Round.....	3.00
2.5" Half.....	3.00
2.5" Full.....	3.00
4" Half.....	3.00
4" Full.....	3.00
Sheet pans.....	1.00



- Never add fresh food to a chafing dish on the buffet table. Take out the used food pan and replace with a full one.
- Round chafing dishes are used for sauces, casserole type entrees and some vegetables. Rectangular chafing dishes are very good for foods that are to be kept flat such as stuffed chicken breasts, fish fillets, lasagna and asparagus spears.
- Do not use anything but sterno type fuel in the burner.
- Stainless steel food pans can be placed in the oven to keep food warm.
- Place 1 inch of hot water in water pan of chafar before service.
- Light sterno 15 minutes before opening the buffet.

## Service Equipment

Chrome tray jack .....	3.00
Black waiter tray (27") .....	1.50
4 pan (cambro) .....	15.00
8 pan (cambro) on wheels .....	25.00
16 pan (cambro) on wheels .....	30.00
Bus tub .....	2.50
Heat lamp (table model w/o cutting board) .....	15.00
Proofer Bread Box (15 sheet pans) .....	50.00
Rack & Roll (oval tray) .....	42.00
Rack & Roll (sheet pan) .....	38.00



4 PAN & 8 PAN CAMBRO

Electric hot box (small) .....	150.00
Electric hot box (medium) .....	225.00
Electric hot box (large) .....	250.00



SERVING TRAY WITH STAND

## Beverage Service

Thermal coffee servers .....	2.00
Glass carafes (1 liter) .....	1.00
Plastic pitchers .....	.75
5 gal. thermal beverage carrier .....	10.00
10 gal. thermal beverage carrier .....	15.00
Ice chest (large) .....	15.00
Horse trough rubber maid .....	15.00
Super Cooler .....	15.00
Portable Bar w/ Ice well .....	100.00



LARGE PLASTIC COOLER WITH DRINK SPOUT



LARGE WHITE PLASTIC COOLER



WHITE PLASTIC COFFEE THERMAL

## Coffee Service

60 cup (40 minute brew time) .....	40.00
100 cup percolator (60 minute brew time) .....	30.00
100 cup samovar .....	60.00 each
Deco Coffee Urn 3 Gallons .....	40.00 each
Deco Coffee Urn 5 Gallons .....	60.00 each



DECO COFFEE URN 3.9 OR 5.9

Use cold water in coffee makers as brewing is timed from a cold water start.

One pound of coffee will make fifty-five cups of brewed coffee. The brewing time on a 100 cup coffee maker is one hour.

## Holding Carts



SMALL ELECTRIC HOT BOX



LARGE ELECTRIC HOT BOX

- Ice chests not only hold ice cubes but beer, wine and extra bar juices.
- Super Cooler holds 1/2 barrel, or 144 cans of beverage w/30 lbs. of ice.
- Whenever you use a hot beverage container, always warm it up by filling it with hot water and then draining the water before finally filling it with the hot beverage.

## Risers/Staging



MULTI-LEVEL STAGING WITH CARPET

4x4 Riser .....	23.00
(All 4x4 Risers on adjustable heights) 12" - 24" - 36"	
Set up of risers per 4 x 4 section .....	4.00 per section
Steps for risers .....	7.50 each
Steps for risers (adjustable) .....	50.00
Carpet for risers (recommended) per 4 x 4 section .....	8.00

(Carpet is recommended to be used with risers)

## Exhibit and Display

Brass easel .....	7.00
Silver easel .....	7.00
White plastic stanchions .....	5.00
White plastic chain .....	.3.00 per 10'ft.
Chrome stanchions .....	15.00
Black 6' rope .....	9.00
Coat racks on wheels .....	15.00
Black post 10' retractable .....	15.00
Red carpet aisle runner 3' x 25' .....	50.00



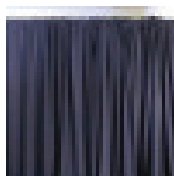
COAT RACK ON WHEELS



SILVER EASEL



CHROME STANCHION



PIPE AND DRAPE

## Pipe/Drape

3' tall per running foot .....	2.00 ft.
8' tall per running foot .....	3.00 ft.
12' tall per running foot .....	6.00 ft.
16' tall per running foot .....	9.00 ft.

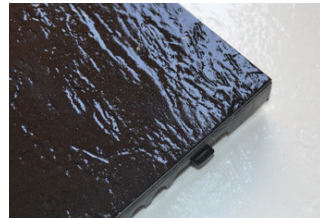
(Note: All pipe/drape rented in 10ft increments)

### \*Applications for Pipe and Drape

- Room dividers
- Back drops
- Dressing rooms
- Cover ups

Trade show booths quoted on request.

## Dance Floors



CUSTOM SIZED BLACK & WHITE DANCE FLOOR



CHERRY WOOD DANCE FLOOR

3x3 section (black & white) .....	15.00
4 x 4 section	
(indoor & outdoor - light oak, indoor only- cherry wood) .....	20.00

### DANCE FLOOR SIZING (3 x 3)

50 guests (9 x 12) .....	180.00
100 guests (12 x 15) .....	300.00
150 guests (15 x 18) .....	450.00
200 guests (18 x 21) .....	630.00
250 guests (21 x 21) .....	735.00
300 guests (24 x 24) .....	960.00

\*Includes Installation

### DANCE FLOOR SIZING (4 x 4)

50 guests (8 x 12) .....	120.00
100 guests (12 x 16) .....	240.00
150 guests (16 x 16) .....	320.00
200 guests (16 x 20) .....	400.00
250 guests (20 x 20) .....	500.00
300 guests (24 x 24) .....	720.00

\*Includes Installation

(317) 251-7368

*A Classic*  
PARTY RENTAL

FAX (317) 253-0586

# Grills & Portable Equipment



LARGE CHARCOAL GRILL



2' X 6' PROPANE GRILL

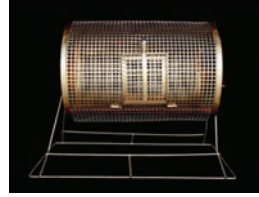


2' X 3' PROPANE GRILL

- Table top butane stove (fuel extra) .....10.00
- Butane fuel for stove ..... 4.00
- Big John charcoal grill (2x5) ..... 43.00
- Propane grill (2x6) burns approx. 8 lbs propane/hr .....125.00
- Propane grill (2x3) burns approx. 4 lbs propane/hr ..... 45.00
- \*Propane is additional.
  
- 40 lb. tank propane (market pricing) ..... 45.00
- 100 lb tank propane (market pricing) .....175.00 daily

Apply a spray shortening to the grill to keep meat from sticking.

# Concession Equipment



RAFFLE DRUM



SNOW CONE MACHINE

- Tabletop popcorn..... 75.00
- Old fashioned popcorn w/cart.....100.00
- Popcorn bags/500.....27.00
- Service pack popcorn ..... 39.00
- Snow cone machine ..... 40.00
- Snow cone cups/200.....12.00
- Snow cone syrup .....15.00
- Snow cone pump..... 8.00

NO RETURNS OF UNUSED CONCESSION SUPPLIES.



SMALL OLD FASHION POPCORN ON CART



# Tents

## FRAME TENTS

3 x 9 frame.....	60.00
9 x 10 frame.....	100.00
10 x 10 frame.....	150.00
12 x 10 frame.....	160.00
15 x 15 frame.....	146.00
15 x 30 frame.....	292.00
15 x 45 frame.....	438.00
15 x 60 frame.....	584.00
16 x 16 frame.....	190.00
16 x 24 frame.....	240.00
16 x 32 frame.....	300.00
16 x 40 frame.....	360.00
20 x 20 frame.....	250.00
20 x 30 frame.....	350.00
20 x 40 frame.....	450.00
30 x 30 frame.....	500.00
30 x 45 frame.....	725.00
30 x 60 frame.....	950.00
40 x 40 frame.....	1400.00
40 x 60 frame.....	2000.00
40 x 80 frame.....	2600.00
40 x 100 frame.....	3200.00
40 x 120 frame.....	3800.00

## POLE TENTS

30 x 30 pole.....	300.00
30 x 45 pole.....	415.00
30 x 60 pole.....	530.00
30 x 75 pole.....	645.00
30 x 90 pole.....	760.00
40 x 40 pole.....	500.00
40 x 60 pole.....	725.00
40 x 80 pole.....	950.00
40 x 100 pole.....	1175.00
40 x 120 pole.....	1400.00
40 x 140 pole.....	1625.00

ALL OTHER SIZES BIGGER THAN 60' x 150' - CALL FOR QUOTE

## TENT SIDEWALL

Solid sides.....	10.00 per 20 ft.
French window sides.....	20.00 per 20 ft.

## TENT ATMOSPHERE

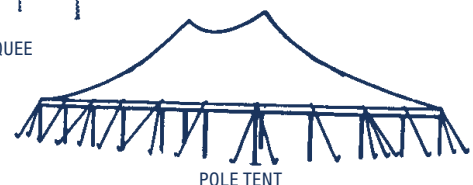
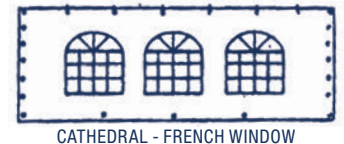
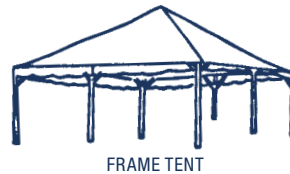
White pole drape covers.....	15.00 each
Center pole drape covers.....	50.00 each
Ballast weight.....	Call for pricing
Perimeter lighting (streamer lighting).....	1.00 per ft.
Tent flooring (custom built).....	Call for pricing
80,000 btu tent heater.....	125.00
170,000 btu tent heater.....	150.00
Floor fans.....	35.00
Drill & fill-in tent is on asphalt (per hole).....	5.00
White resin picket fencing (48" x 6').....	20.00

## A Classic Presents the New "Diamond Series" of Tenting.

The true fabric architecture of the New Century Tent creates a dynamic impression. Inside the tent is a smooth flowing, seemingly endless inner space. Outside the tent are futuristic curves and peaks to defy the elements. The New Century Tent system is a work of art!

## CENTURY POLE TENT

30 x 30 Century Pole.....	360.00
30 x 45 Century Pole.....	540.00
30 x 50 Century Pole.....	600.00
30 x 60 Century Pole.....	720.00
30 x 75 Century Pole.....	900.00
30 x 80 Century Pole.....	960.00
30 x 95 Century Pole.....	1140.00
40 x 40 Century Pole.....	525.00
40 x 60 Century Pole.....	765.00
40 x 80 Century Pole.....	1005.00
40 x 100 Century Pole.....	1245.00
40 x 120 Century Pole.....	1485.00
40 x 140 Century Pole.....	1725.00
60 x 40 Century Pole.....	1200.00
60 x 60 Century Pole.....	1800.00
60 x 70 Century Pole.....	2100.00
60 x 90 Century Pole.....	2700.00
60 x 100 Century Pole.....	3000.00
60 x 120 Century Pole.....	3600.00
60 x 130 Century Pole.....	3900.00
60 x 150 Century Pole.....	4500.00
60 x 160 Century Pole.....	4800.00



(317) 251-7368

*A Classic*  
PARTY RENTAL

FAX (317) 253-0586

# Clear Span Tenting

## CLEAR SPAN TENTS ARE THE PERFECT SOLUTION FOR WEATHER-TIGHT EVENTS.

- Track Side walls provide greater efficiencies for Heating & Cooling needs
- With-stands high winds, rain and adverse weather conditions
- No flapping sidewalls

## CLEAR SPAN ADVANTAGES

- Great for long term use
- Unobstructed interior space usage
- Rafters can accommodate complex Lighting and AV Systems
- More interior options to choose from in creating a truly memorable event

### 30' SERIES

30' x 30' Clear Span.....	585.00
30' x 45' Clear Span.....	877.00
30' x 60' Clear Span.....	1169.00

### 40' SERIES

40' x 32'.8" Clear Span .....	1640.00
40' x 49'.2" Clear Span .....	2460.00
40' x 65'.6" Clear Span .....	3280.00
40' x 82' Clear Span.....	4100.00
40' x 98'.4" Clear Span.....	4920.00
40' x 114'.8" Clear Span.....	5740.00

### 66' SERIES

66' x 32'.8" Clear Span .....	3247.00
66' x 49'.4" Clear Span.....	4891.00
66' x 65'.6" Clear Span.....	6535.00
66' x 82' Clear Span.....	8171.00
66' x 98'.4" Clear Span.....	9832.00
66' x 114'.8" Clear Span.....	11467.00
66' x 131'.2" Clear Span.....	13111.00

## INTERIOR OPTIONS FOR CLEAR SPAN SERIES TENTING:

### Sidewalls

8' x 15' Solid Track Wall.....	20.00
8' x 15' French Window Track Wall .....	30.00
9' x 16'.4" Solid Track Wall .....	40.00
9' x 16'.4" French Window Track Wall.....	50.00

### Flooring

Clear Span Flooring .....	\$1.50 per ft. Installed
"Ultra Deck" Flooring.....	\$1.00 per ft. Installed
(Durable Resin Flooring for most surfaces)	

(Carpeting additional call for rate)

### Tent Liner

Elegant white gathered liner .....	.50 per ft. Installed
------------------------------------	-----------------------

### Tent Door Ways

French Door Openings .....	\$400.00 each Installed
----------------------------	-------------------------

### Tent Chandeliers

Tent Chandeliers.....	\$350.00 each Installed
-----------------------	-------------------------

### Tent Leg Wraps

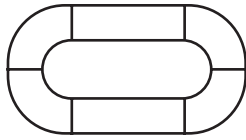
White Fabric leg covers .....	\$50.00 each Installed
-------------------------------	------------------------



# Banquet, Dinner Meetings and Buffet Layout

These diagrams give some indication of the many unique table layouts possible and the linens needed.

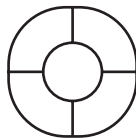
- 4 Serpentine Tables
- 2 6' Tables
- 6 54" x 120" Cloths
- 4 13' Skirts
- 2 8' Skirts



- 1 5' Round Table
- 1 90" Round Cloth
- 2 8' Skirts



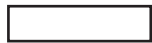
- 4 Serpentine Tables
- 4 Banquet Cloths
- 1 13' Skirt
- 2 8' Skirts



- 3 Serpentine Tables
- 3 Banquet Cloths
- 2 4' Round Tables
- 2 90" Round Cloths
- 3 13' Skirts
- 1 8' Skirt



- 1 8' or 6' Table
- 1 Banquet Cloth
- 1 13' Skirt
- 1 8' Skirt



- 2 Serpentine Tables
- 2 Serpentine Cloths
- 2 8' Skirt



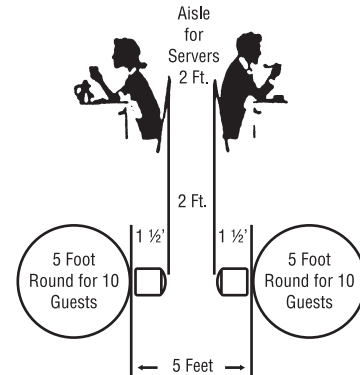
- 1 4' Round Table
- 1 90" Round Cloth
- 1 13' Skirt



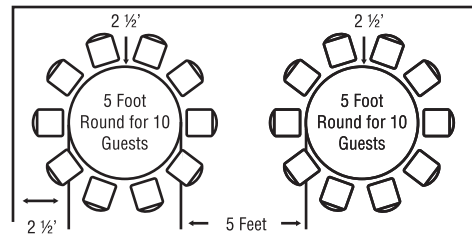
# Party Seating & Space Info

- Cocktail Parties (stand up).....5 to 6 sq. ft./person
- Cocktail Parties (some seated) .....8 sq. ft./person
- Reception, Tea type (some seated) .....8 sq. ft./person
- Dinner, using oblong tables.....8 sq. ft./person
- Dinner, using round tables of 10 ..... 10 sq. ft./person
- Cathedral seating (seating in rows)..... 6 sq. ft./person
- Dance area..... 2 to 4 sq. ft./person

## How To Set Up 5 Foot Rounds For 10

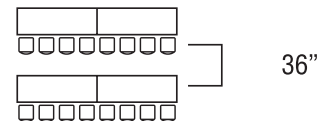


Aisles are included in the 5 ft. space between the tables.



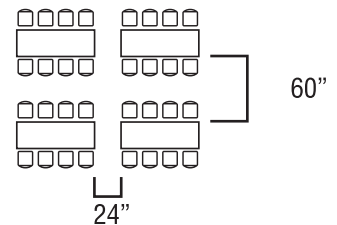
## Classroom Style:

Rule of thumb for seating capacity is to divide the student seating area (sq. ft.) by 8.



## Banquet Style Using Oblong Tables:

Rule of thumb for seating capacity is to divide the room area (sq. ft.) by 8.





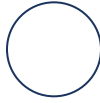






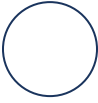











## Theater Style Seating Arrangements:



# Linen & Table Compatibility Chart

Use this chart to match the correct linen size with the table. (Standard table height is 30".)

13" x 120" Runner may be used as Decorative Strip on tables 4' and larger.

	 8' Banquet	 6' Banquet	 6' Round	 5' Round	 4' Round	 36" Round	 30" Round	 36" x 36"	 5" Half Round
 132" Round			To Floor						
 120" Round			24" Drop	To Floor					
 108" Round			18" Drop	24" Drop	To Floor				
 96" Round	Decorative Overlay	Decorative Overlay	12" Drop	18" Drop	24" Drop	To Floor			Top Cloth
 90" Round	Decorative Overlay	Decorative Overlay	9" Drop	15" Drop	21" Drop	27" Drop	To Floor	Round Corners 27" Drop	
 80" Square	Decorative	Decorative Top Cloth	Decorative Top Cloth	Decorative 8" Drop	Decorative 10" Drop	22" Drop 16" Drop	Top Cloth 25" Drop	Top Cloth 22" Drop	
 54" Square	Decorative Top Cloth	Decorative Top Cloth	Decorative Top	Decorative Top	Decorative 3" Drop	9" Drop		Top Cloth 9" Drop	
 90"x156" Rectangle	To Floor All Sides								
 90"x132" Rectangle		To Floor All Sides							
 60"x120" Banquet	Front/Back 15" Drop	Top Cloth 15" Drop							
 13' Skirt	Three Sides	Three Sides	Two Full Skirts	One Skirt &	One Full Skirt	One Full Skirt		One Full Skirt	Full Skirt
 8' Skirt	One Side	One Side	Three Full Skirts	One Skirt	Two Skirts		One Full Skirt	Two Skirts	One Skirt will Cover Edge

# Notes

## Ten Helpful Hints for Planning a Successful Party:

1. Plan ahead as far as possible to ensure your choices will be available when you want them.
2. Determine your budget. A Classic Party Rental will help you select and share cost saving tips to make your event affordable.
3. Plan your party with a theme.
4. Choose a venue or site to host your event.
5. Determine the number of guests for your event.
6. Meet and choose a caterer to determine the type of food and cost.
7. Send out invitations at least eight (8) weeks prior to your event.
8. Determine other professional needs, including florist, photographer, bakery, entertainment, decorations, and party favors.
9. Determine if accommodations and transportation will be necessary for your invited guests.
10. Finalize all aspects of your event with the professionals that you have chosen at least one week out prior to your event.





[www.aclassicpartyrental.com](http://www.aclassicpartyrental.com)

---

1333 E. 86th Street  
Indianapolis, IN 46240

---

P: 317.251.7368  
F: 317.253.0586

---

**Hours:**

M-F: 9am - 5pm  
Saturday: 8am - Noon  
*Closed Sundays*



Find us on Facebook



@aclassicparty



A Classic Party Rental